

London, April 2023

Issue 1 *A refuge from the urban sprawl*

Parklife is an independent publication edited by Continente Editions about outdoor space, curated by Paola Ristoldo and Alessandro Furchino Capria. The magazine, launched in April 2023 in London and with annual release, addresses stories of ordinary and uncommon places by developing visual and literary narratives.

Driven by a primordial need to create, occupy and control a territory, human being becomes inhabitant of a place defined and circumscribed by and for himself. Why does humanity feel the need to design these spaces? How are they experienced?

Through an authorial approach and with unpublished projects, thirteen artists and a confrontation between an architect and a designer explore the concept of the park understood as a place of daily life. All these visions make it possible to conceive green space and its inhabitants as an essential and united part of the city context.

Parklife is a refuge from the urban sprawl.

Creative Direction & Editing

Paola Ristoldo
Alessandro Furchino Capria

Art Direction & Design

Michela Zoppi

Contributors

Eleonora Agostini
Valentin Bansac
C GROUP
Max Creasy
Jack Day
Tobia Faverio
Alessandro Furchino Capria
Federico Gioco
Takashi Homma
Vladimir Kaminetsky
Francesco Nazardo
Paola Ristoldo
Federico Torra
Jack Self
Mariana Siracusa
Morten Thuesen

Typeface

Clarendon Graphic, François Rappo

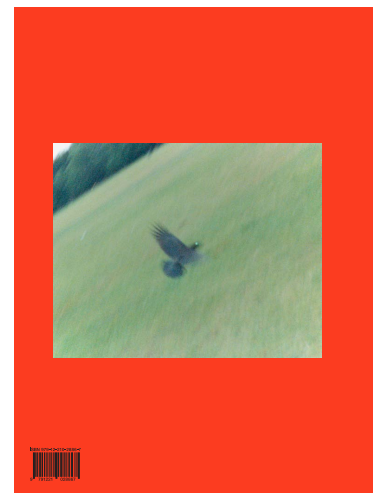
International Distribution

Antenne Books
mail@antennebooks.com
www.antennebooks.com

www.parklife-parklife.com
@parklifeparklife



Front Cover
Takashi Homma, Tokyo



Back Cover
Francesco Nazardo, Not Interested

Continente

Continente Editions
www.l.continenteeditions.com

Issue 1 *A refuge from the urban sprawl*

Works (Publication sequence)



Takashi Homma
Tokyo



Alessandro Furchino Capria
Parchetti



Eleonora Agostini
Laying with Strangers



Federico Torra
Milano Parco Nord



Paola Ristoldo
Benches



Jack Day
Joggers, London



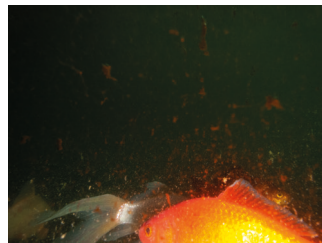
Max Creasy
Philopappos Hill, Athens



Federico Gioco
Mile End



Valentin Bansac
Post-Nature



Tobia Faverio
Giardini della Guastalla



C GROUP
IMGS_2022



Vladimir Kaminetsky
Victoria Park Essentials



Francesco Nardo
Not Interested

Issue 1 *A refuge from the urban sprawl*

Creative Direction & Editing
Paola Ristoldo
Alessandro Furchino Capria

Art Direction & Design
Michela Zoppi

Publishing
Continente Editions
1.continenteeditions.com

Contributing Photographers
Eleonora Agostini
Valentin Bansac
C GROUP
Max Creasy
Jack Day
Tobia Faverio
Alessandro Furchino Capria
Federico Gioco
Takashi Homma
Vladimir Kaminetsky
Francesco Nazardo
Paola Ristoldo
Federico Torra

Writers
Jack Self
Mariana Siracusa
Morten Thuesen

Thank you
Nikki Stromberg
Marion Zaphirato
Maddy Thompson
Our friends and families

Typeface
Clarendon Graphic, François Rappo

International Distribution
Antenne Books
mail@antennebooks.com
www.antennebooks.com

Enquiries
parklife@parklife-parklife.com
www.parklife-parklife.com
IG@parklifeparklife

PARKLIFE ©2023
The authors and writers, the photographers,
and Continente Editions. Reproduction without permission prohibited.

ISBN 979-12-210-2886-7

Front Cover Takashi Homma, Tokyo
Back Cover Francesco Nazardo, Not Interested
Edition of n.500 copies